



PSP Globalcom International Direct Dial (011+) Programming Instructions
Elcotel - Series 5 – Multiple Dial Pattern Version

Programming Instructions:

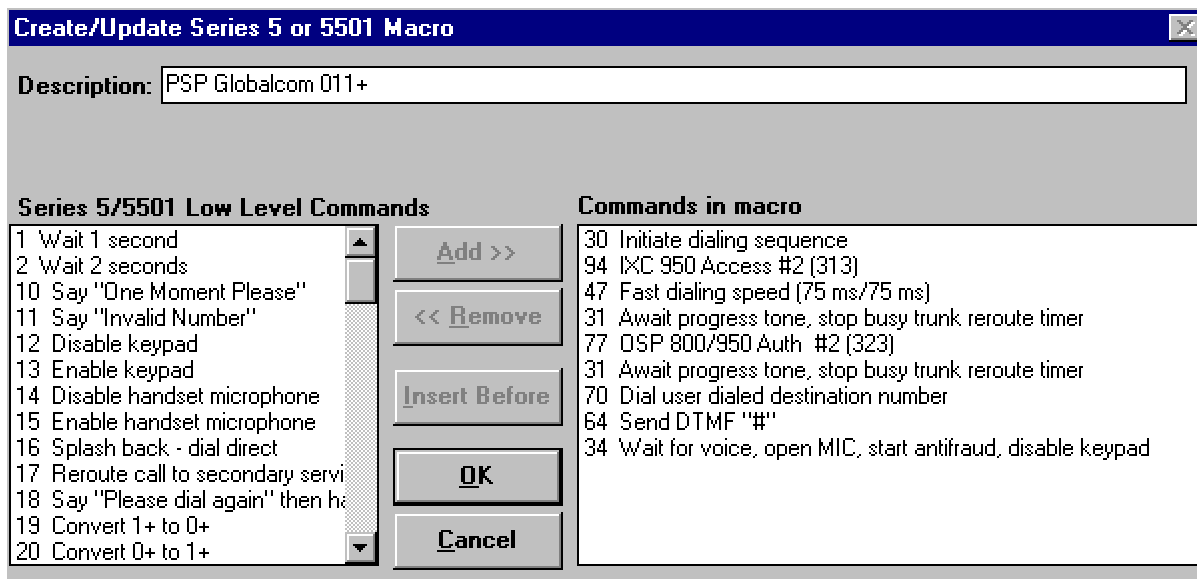
1. Make a new Macro.
2. Make a new Register and Option Template or globally make changes.
3. Make a new Priority Parsing File or edit an existing file.
4. Download and test.

1. Make a new Macro.

- 1a. To make a new Macro, select 'Configuration' from the Operator Console Main Menu.
- 1b. Then choose item 4, 'Macro Configuration'.
- 1c. Click on 'New' and enter 'PSP Globalcom 011+' in the description.
- 1d. **Add the following low level commands and click OK when finished:**

30 94 47 31 77 31 70 64 34

- | | |
|----|--|
| 30 | Initialize dialing sequence |
| 94 | IXC 950 Access #2 (313) |
| 47 | Fast dialing speed |
| 31 | Wait for progress tone |
| 77 | OSP 800/950 Auth #2 (323) |
| 31 | Wait for progress tone |
| 70 | Dial destination number |
| 64 | Send DTMF "#" |
| 34 | Wait for voice, open MIC, start anti-fraud |



2. Make a new Register and Option Template or globally make changes.

- 2a. Click '1+ IXC'.
- 2b. In 'Current Value' for Register **313**, enter: 1XXXXXXXXXX (REPLACE THE Xs with the toll free number we provided you)
- 2c. Click 'Call Types'.
- 2d. In 'Current Value' for Register **215**, enter: 0
- 2e. Click 'Miscellaneous Registers'.
- 2f. In 'Current Value' for Register **323**, enter: 11111 (DO NOT USE 11111 AS YOUR AUTH CODE, but instead type in the assigned 5-digit auth code provided by our office.)
- 2g. Click the 'Macro' button at the bottom and assign Macro **50** to PSP Globalcom.

Series 5/5501 Registers and Options

Category Titles: 1+ IXC (InterExchangeCarrier) Data for: 1+ IXC (InterExchangeCarrier) Enter NPANXXXXXXXX

Reg.	Description	Current Value
131	Delete the 1 from all 1+ calls	OFF
146	Strip and Ignore 1+ 10xxx Prefixes	OFF
310	IXC 800 & 950 access number #1	
313	IXC 800 & 950 access number #2	1XXXXXXXXX
325	IXC 10xxx Access number #1	
328	IXC 10xxx Access number #2	

Registers and Options settings for: PSPGLOBALCOM

Buttons: Compare... Set Like... Macro... Factory Search... Print Call Options Close

Series 5/5501 Registers and Options

Category Titles: Call Types Data for: Call Types Enter 00 - 99

Reg.	Description	Current Value
205	5 Sent paid IntraLATA calls	2
206	6 Sent paid InterLATA calls	2
207	7 Sent paid InterState calls	2
208	8 Sent paid extended NPAs (Canada, etc)	2
209	9 10-xxx 0+ & 0- calls	1
210	10 800-NXX-xxxx calls	1
211	11 900-NXX-xxxx calls	0
212	12 976-xxxx calls	0
213	13 950-xxxx calls	6
214	14 01+ (Operator assisted) International calls	0
215	15 011+(Sent paid coin) International calls	0
216	16 10-xxx 1+ calls	0
217	17 Speed Dial calls	2
218	18 Restricted 1+ calls (Routing to LEC)	2
219	19 Coin call - Corridor	2

Registers and Options settings for: PSPGLOBALCOM

Buttons: Compare... Set Like... Macro... Factory Search... Print Call Options Close

Payphone211.com is happy to assist you by offering programming suggestions, however, we cannot accept the responsibility for charges incurred due to programming errors.

Series 5/5501 Registers and Options

Category Titles Data for: Miscellaneous Registers Enter up to 19 digits

Configuration	Reg.	Description	Current Value
Telemetry	194	Spare	OFF
Information/Special Pricing	195	Spare	OFF
Time of Day Discounts	196	Spare	OFF
1+ IXC (InterExchangeCarrier)	197	Spare	OFF
0+/- DSP(OperatorSvcProvider)	198	Spare	OFF
Alarms	199	Spare	OFF
AntiFraud/Answer Detect	311	1+ IXC Auth code 1	
Service Desk	320	0+ DSP Auth Code 1	
Call Types	321	0+ DSP Aux. Auth Code 1	
PADF	323	0+ DSP Auth Code 2	11111
Miscellaneous Registers	324	0+ DSP Aux Auth Code 2	
Coin-Line/5501	326	Spare Auth # 1	
Permissive Dialing	327	Spare Auth # 2	
	436	Amount to cap timed local coin calls	0.00
	438	User defined escrow hopper amount	0.00

Registers and Options settings for: PSPGLOBALCOM

Compare... Set Like... Macro... Factory Search... Print Call Options Close

Note: Replace our example of 11111 with the assigned authorization code provided for your account.

Series 5/5501 Macros for - PSPGLOBALCOM

Macro Assignments			
ID	Name	Commands	
45	Unassigned		
46	Unassigned		
47	Unassigned		
48	Unassigned		
49	Unassigned		
50	PSP Globalcom	30 94 47 31 77 31 70 64 34	

Command Descriptions	
1	Wait 1 second
2	Wait 2 seconds
10	Say "One Moment Please"
11	Say "Invalid Number"
12	Disable keypad
13	Enable keypad
14	Disable handset microphone
15	Enable handset microphone
16	Splash back - dial direct
17	Reroute call to secondary service
18	Say "Please dial again" then hang up
19	Convert 1+ to 0+
20	Convert 0+ to 1+

OK Cancel

3. Make a new Priority Parsing File or edit an existing file.

- 3a. To make a new Priority Parsing file or edit an existing file, select 'Configuration' from the Operator Console Main Menu.
- 3b. Choose item 5, 'Priority Parsing'.
- 3c. Highlight the Priority Parsing File you will be editing, or create a new file.
- 3d. Click on, 'Edit'.
- 3e. Edit your existing 011 pattern. You will need a total of four dial patterns.

For Mexico City:

3f1A. For this 'Dial Pattern', type: 0115255*.

3f1B. **NOTE: ONLY FOR PNM Plus version 2.2.0 and higher, type: 0115255+.**

3f2. Under 'Macro Number', type 50. (This refers to the macro you made from page 1)

Payphone211.com is happy to assist you by offering programming suggestions, however, we cannot accept the responsibility for charges incurred due to programming errors.

- 3f3. 'Completion Timer' can remain a !.
- 3f4. For 'Initial Rate', type: 1.00 and for 'Initial Time', type: 10
- 3f5. For 'Additional Rate', type: 1.00 and for 'Additional Time', type: 10
- 3f6. 'Call Type' can remain a !.

For Monterrey:

- 3g1A. For this 'Dial Pattern', type: 0115281*.
- 3g1B. **NOTE: ONLY FOR PNM Plus version 2.2.0 and higher, type: 0115281+.**
- 3g2. Under 'Macro Number', type 50.
- 3g3. 'Completion Timer' can remain a !.
- 3g4. For 'Initial Rate', type: 1.00 and for 'Initial Time', type: 5
- 3g5. For 'Additional Rate', type: 1.00 and for 'Additional Time', type: 5
- 3g6. 'Call Type' can remain a !.

For Guadalajara:

- 3h1A. For this 'Dial Pattern', type: 0115233*.
- 3h1B. **NOTE: ONLY FOR PNM Plus version 2.2.0 and higher, type: 0115233+.**
- 3h2. Under 'Macro Number', type 50.
- 3h3. 'Completion Timer' can remain a !.
- 3h4. For 'Initial Rate', type: 1.00 and for 'Initial Time', type: 5
- 3h5. For 'Additional Rate', type: 1.00 and for 'Additional Time', type: 5
- 3h6. 'Call Type' can remain a !.

For the rest of Mexico and the World:

- 3i1A. For this 'Dial Pattern', type: 011*.
- 3i1B. **NOTE: ONLY FOR PNM Plus version 2.2.0 and higher, type: 011+.**
- 3i2. Under 'Macro Number', type 50.
- 3i3. 'Completion Timer' can remain a !.
- 3i4. For 'Initial Rate', type: 1.00 and for 'Initial Time', type: 3
- 3i5. For 'Additional Rate', type: 1.00 and for 'Additional Time', type: 3
- 3i6. 'Call Type' can remain a !.

- 3j. Click 'OK' and when finished editing all other priority parsing files, click 'Close'.
- 3k. In Phone Detail, assign the new Priority Parsing file to your phone location. Or, be sure to edit the Priority Parsing file already being used.

The screenshot shows a window titled "Priority Parsing Editor (P94)" with a sub-header "Editing file PSPGLOBA.P94". The window contains a table with 10 rows and 10 columns. The columns are: Pattern Number, Dial Pattern, Macro Number, Completion Timer, Initial Rate, Initial Time, Addnl Rate, Addnl Time, and Call Type. The data in the table is as follows:

Pattern Number	Dial Pattern	Macro Number	Completion Timer	Initial Rate	Initial Time	Addnl Rate	Addnl Time	Call Type
1	0115255*	50	!	1.00	10	1.00	10	!
2	0115281*	50	!	1.00	5	1.00	5	!
3	0115233*	50	!	1.00	5	1.00	5	!
4	011*	50	!	1.00	3	1.00	3	!
5	1XXXXXXXXXX	0	!	!!!	0	0.00	0	!
6		!	!	!!!	0	0.00	0	!
7		!	!	!!!	0	0.00	0	!
8		!	!	!!!	0	0.00	0	!
9		!	!	!!!	0	0.00	0	!
10		!	!	!!!	0	0.00	0	!

At the bottom of the window, there are five buttons: "Up", "Down", "Insert", "OK", and "Cancel".

Note: Set times and amounts to what you desire.

4. Download and test.

- 4a. Download to one phone and make test calls.
- 4b. **Test your programming by dialing 011-999-999-9999. If your programming is correct, you will receive a SIT tone, a message that your call attempt was successful and the coins will be returned when you hang up.**
- 4c. **Test your programming by dialing 011-999-888-8888. This test produces NO SIT tone and the money will not be returned. There is a charge for each test. You will receive an email confirmation of your test calls. If you experience problems, call 1-877-211-9901.**
- 4d. If satisfied with testing, repeat all steps and download all other phones.

Carrier Protocol:

- 1. User dials 011 + country code + city code and deposits coins when prompted.
- 2. The payphone simultaneously dials our toll-free access number and waits for dial tone.
- 3. Upon hearing dial tone, the payphone sends your 5-digit auth code and waits for dial tone.
- 4. Upon hearing the second dial tone, the payphone dials the destination number and opens up the handset for the customer to use with their call and to hear the progress of the call.
- 5. While the call is processing, our switch provides an accurate lack of answer detect until the destination answers. If the destination is busy or does not answer, the payphone user's money is returned.