



**PSP Globalcom International Direct Dial (011+) Programming Instructions**  
**Ernest - Series D-3 and Higher – Single CSN Entry Version**

**Programming Instructions:** Set the following Options in Programmable Features:

- Option 38E – InterN Swt/OCC Code #: 04
- Option 38K – Switch Service #4 Num: 1-XXX-XXX-XXXX (replace with our toll-free)
- Option 38L – Switch Service #4 ID: 11111\*\*\*\*\* (your auth code plus 11 \*'s)  
 (DO NOT USE 11111 AS YOUR AUTH CODE, instead, type the assigned 5-digit auth code provided by our office.)
- Option 63B – Delayed Dialing Int : YES

**Programmable Features**  
 File Transfer Quick Exit

<b>Option 38c</b> InterL Swt/OCC Code# 00	<b>Option 38f</b> Callback Srv Code # 00	<b>Option 38i</b> Switch Service #3 Num 0-000-000-0000	<b>Option 38l</b> Switch Service #4 ID 11111*****
<b>Option 38d</b> InterS Swt/OCC Code# 00	<b>Option 38g</b> OCC Code #1 Number 0000000000000000	<b>Option 38j</b> Switch Service #3 ID 0000000000000000	<b>Option 38m</b> Add Home NPA If Swt? NO
<b>Option 38e</b> InterN Swt/OCC Code# 04	<b>Option 38h</b> OCC Code #2 Number 0000000000000000	<b>Option 38k</b> Switch Service #4 Num 1-XXX-XXX-XXXX	<b>Option 39</b> Call on Box Collect? NO

Working File: C:\TFW\FEA\PAY211.FEA Don't forget to save your changes!

Toggle All Tags Tag All Untag All Clear Previous Next

**Programmable Features**  
 File Transfer Quick Exit

<b>Option 62a</b> Inter-digit Time 08	<b>Option 62d</b> Predial Digits 0000000000000000	<b>Option 65a</b> Enable SMDR? YES	<b>Option 66b</b> IC 2nd Period Amount \$0.00
<b>Option 62b</b> Dialing Timer #1 18	<b>Option 63a</b> Delayed Dialing All NO	<b>Option 65b</b> SMDR on Local Calls? YES	<b>Option 66c</b> IC Secondary Period 00
<b>Option 62c</b> Dial Timer #2 18	<b>Option 63b</b> Delayed Dialing Int YES	<b>Option 66a</b> Incoming Free Time 000	<b>Option 67a</b> 10 Dgt O'rde 1st Amt \$.**

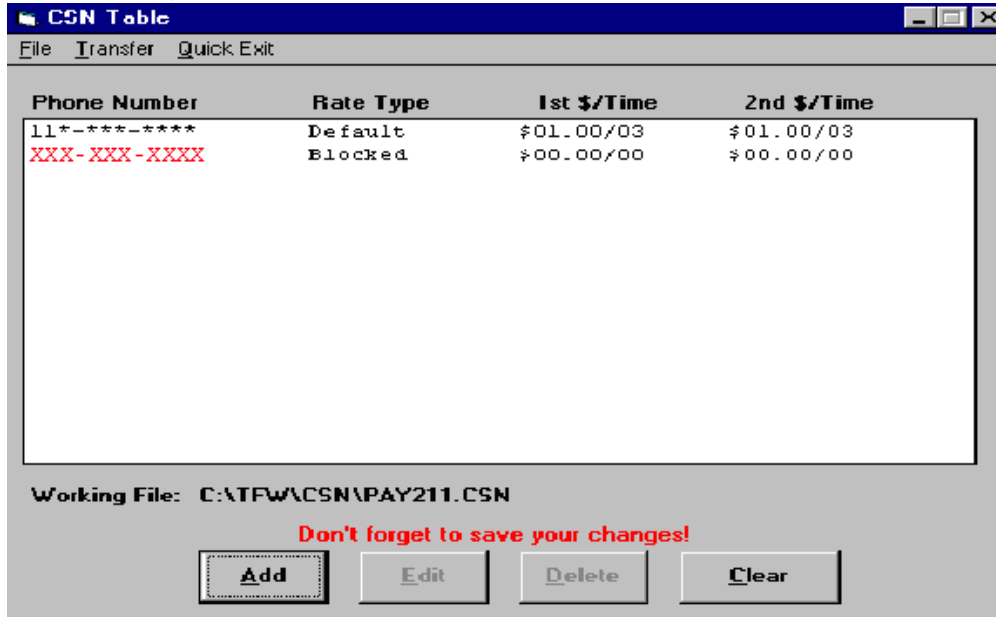
Working File: C:\TFW\FEA\PAY211.FEA Don't forget to save your changes!

Toggle All Tags Tag All Untag All Clear Previous Next

**Note:** To make Option changes, double-click anywhere in the Option to produce a window where changes can be made.

Within the CSN Table, set up the following:

Phone Number	Rate Type	1 <sup>st</sup> \$/Time	2 <sup>nd</sup> \$/Time
11*_**_*-****	Default	\$01.00/03	\$01.00/03
XXX-XXX-XXXX	Blocked	(Replace with the toll free number we provided. This will block access from the keypad to avoid fraud.)	



**Note:** To make CSN changes, click on add or edit to produce a window where changes can be made.

**Note:** Set times and amounts to what you desire.

- Save changes, download to one phone and make test calls. **Test your programming by dialing 011-999-999-9999. If your programming is correct, you will receive a SIT tone, a message that your call attempt was successful and the coins will be returned when you hang up.**
- **Test your programming by dialing 011-999-888-8888. This test produces NO SIT tone and the money will not be returned. There is a charge for each test. You will receive an email confirmation of your test calls. If you experience problems, call 1-877-211-9901.**
- If satisfied with testing, repeat above steps to all other **.FEA** and **.CSN** files participating in this program and download all other phones.

.....

### Carrier Protocol:

1. User dials 011 + country code + city code and deposits coins when prompted.
2. The payphone simultaneously dials our toll-free access number and waits for dial tone.
3. Upon hearing dial tone, the payphone sends your 5-digit auth code and waits for dial tone.
4. Upon hearing the second dial tone, the payphone dials the destination number and opens up the handset for the customer to use with their call and to hear the progress of the call.
5. While the call is processing, our switch provides an accurate lack of answer detect until the destination answers. If the destination is busy or does not answer, the payphone user's money is returned.

Payphone211.com is happy to assist you by offering programming suggestions, however, we cannot accept the responsibility for charges incurred due to programming errors.